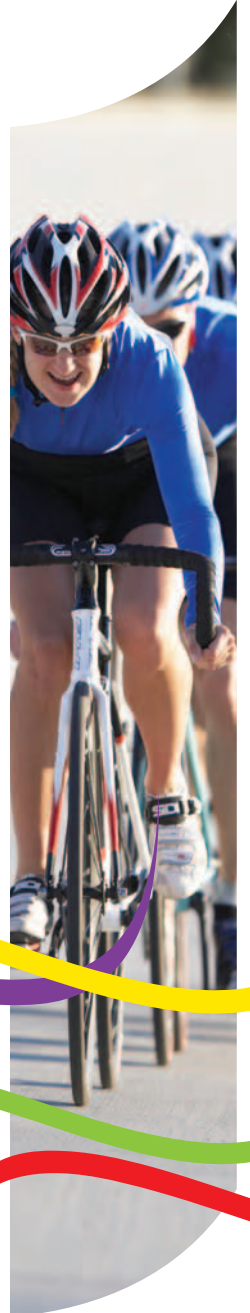
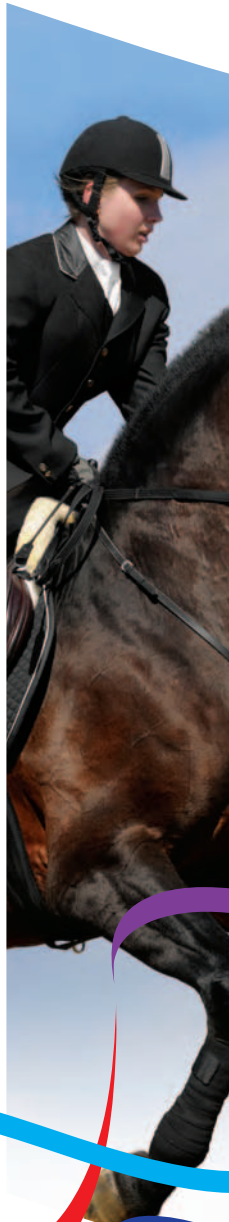
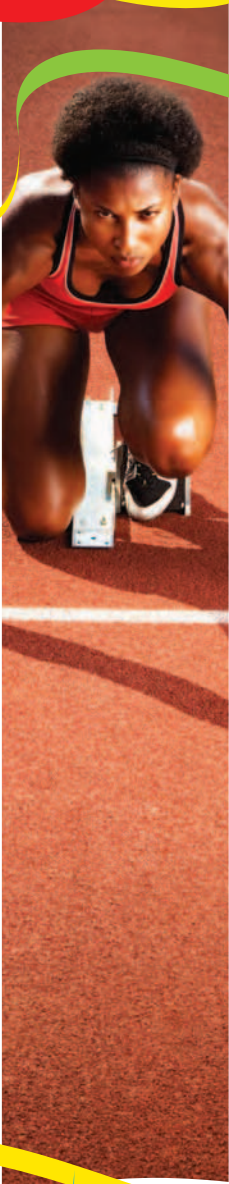


Choose *Surrey* 2012

Pre-Games preparation camps
and training facilities in Surrey, UK





Surrey Hills

Contents

<i>Welcome to Surrey</i>	2
<i>Why choose Surrey?</i>	4
<i>Surrey's pre-games training camps</i>	6
<i>Olympic training venues</i>	8
<i>Accommodation options</i>	10
<i>Support services</i>	11
<i>A personalised package for you</i>	12
<i>A beautiful county</i>	14
<i>The cultural legacy in Surrey</i>	16
<i>Doing business in Surrey</i>	18
<i>Conference and meeting venues</i>	19
<i>Contact details</i>	20



Welcome to Surrey

Here in Surrey we understand how important it is to choose the right location for your pre-games training and preparation. It's a choice that can take you a step closer to an Olympic medal.

Surrey is a uniquely beautiful county with a rich history and vibrant cultural life. Bordering London, and with excellent transport links to the capital and the Olympic Park, it's an ideal base for making the most of your Olympic experience.

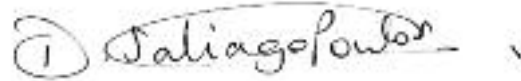
In this brochure we've put together key information to help you to make your decision. You'll find details of our accredited training camps, a range of accommodation options and information about the support services we offer. Our experienced team are standing by to create tailored packages to meet your particular needs.

We recognise that your athletes will want to involve friends and family in their preparation and celebrations and that you'll have important guests to look after. So we've included information about enjoying the county's attractions as well as business and conferencing facilities.

Surrey is already getting ready for 2012 and our busy cultural programme is underway. We know that some teams will value the peace and seclusion that Surrey can offer but there will also be opportunities for all our visitors to become part of our 2012 celebrations, enjoy the benefits of cultural exchange and contribute to our Olympic legacy.

We look forward to meeting you and discussing how we can help your team achieve its best. I would like to take this opportunity of wishing you every success in the London 2012 Olympics.

Best wishes,



Denise Saliagopoulos
Cabinet Member for Community Services
Tourism and the 2012 Games
Surrey County Council





Surrey Hills

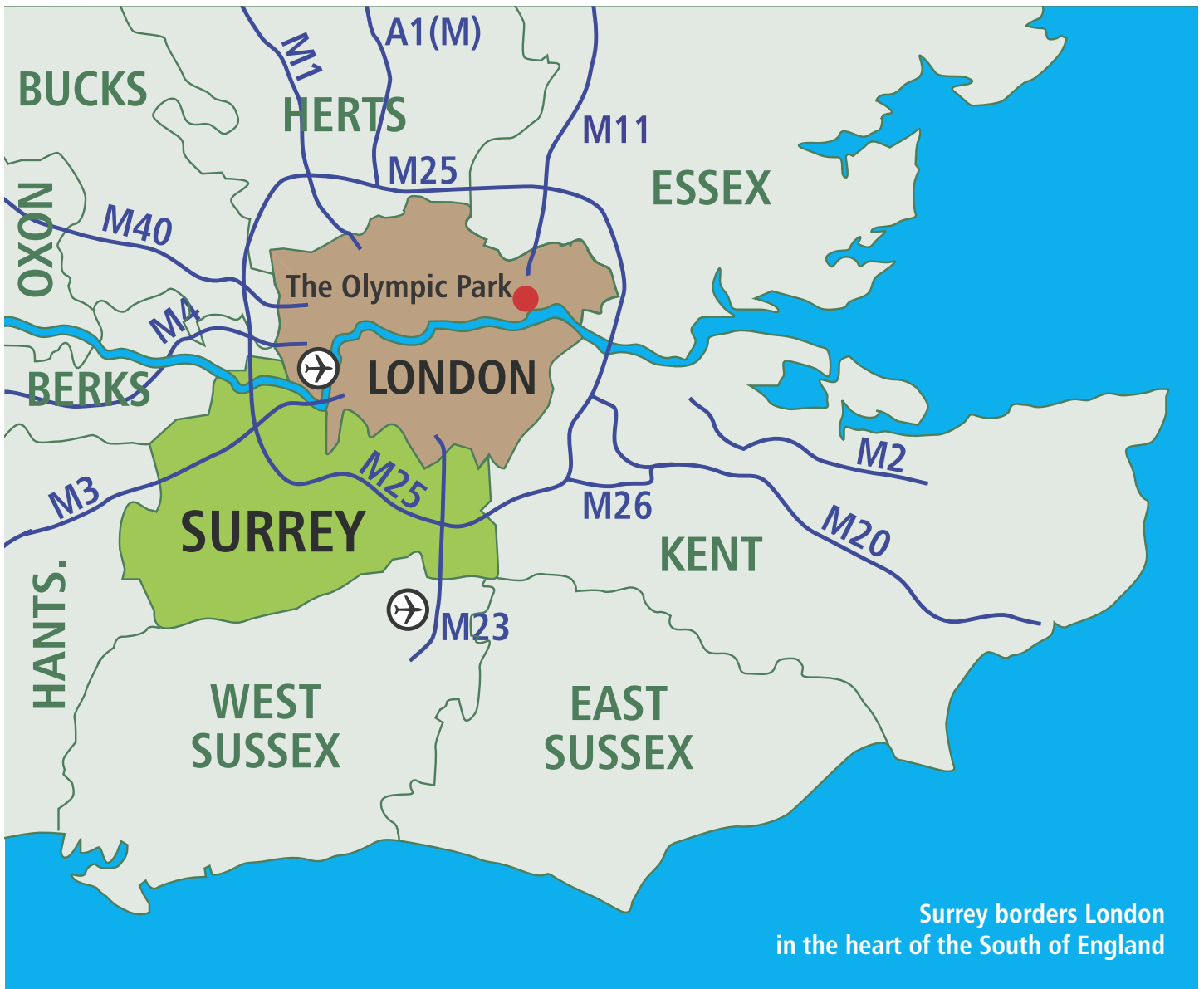
Why choose Surrey?

Perfect location

Surrey borders London and is less than thirty minutes by train from the centre and one hour from the Olympic Park in Stratford. The county has excellent road and rail transport links and the UK's two main international airports, Heathrow and Gatwick are on the edge of the county.

It is easy to get to Surrey from anywhere in the world. Once you have landed you can be at your accommodation within minutes.

Surrey gives your athletes the opportunity to train in the same climate as the games will be held.



A sporting heritage

Surrey has a strong sporting heritage, home to Bisley, the National Shooting Centre, and to the training base for Chelsea football club in Cobham. The county has been a centre for a wide range of sports and now boasts some of the country's newest and most advanced facilities at the Surrey Sports Park.

The county is the home of many Olympians including Rebecca Romero (cycling), Andrew Simpson (sailing), Andy Triggs-Hodge (rowing), Tim Brabants (canoeing), Sarah Webb (sailing) and Kirsten Lawton (trampolining) who is also a graduate of the University of Surrey. We understand what it takes to be an Olympic competitor.

Quality and range of facilities

The county is home to 20 venues that have qualified as official pre-games training camps for the London 2012 Olympic Games. Many of them already host international athletes. It is also the location for one of the UK's newest facilities, the Surrey Sports Park, a centre of excellence designed by Olympians for Olympians.

Support

Surrey has a dedicated 2012 team ready to help you make the most of your stay. Our experienced professionals can offer you advice and information and build a tailored facilities and accommodation package around your needs.

We'll be on hand to make sure your time in Surrey goes smoothly with no disruptions to your training programmes. Each training camp will have an adviser on hand to help you access all the services and support you need.



Surrey's pre-games training camps

Surrey has more than 20 accredited pre-games training and preparation camps. They all provide excellent facilities and many of them have hosted international athletes and events. The facilities range from the brand new Surrey Sports Park, a multi-disciplinary state of the art campus designed to train elite athletes, to the National Shooting Centre at Bisley, the only facility in England that can accommodate all the shooting disciplines.

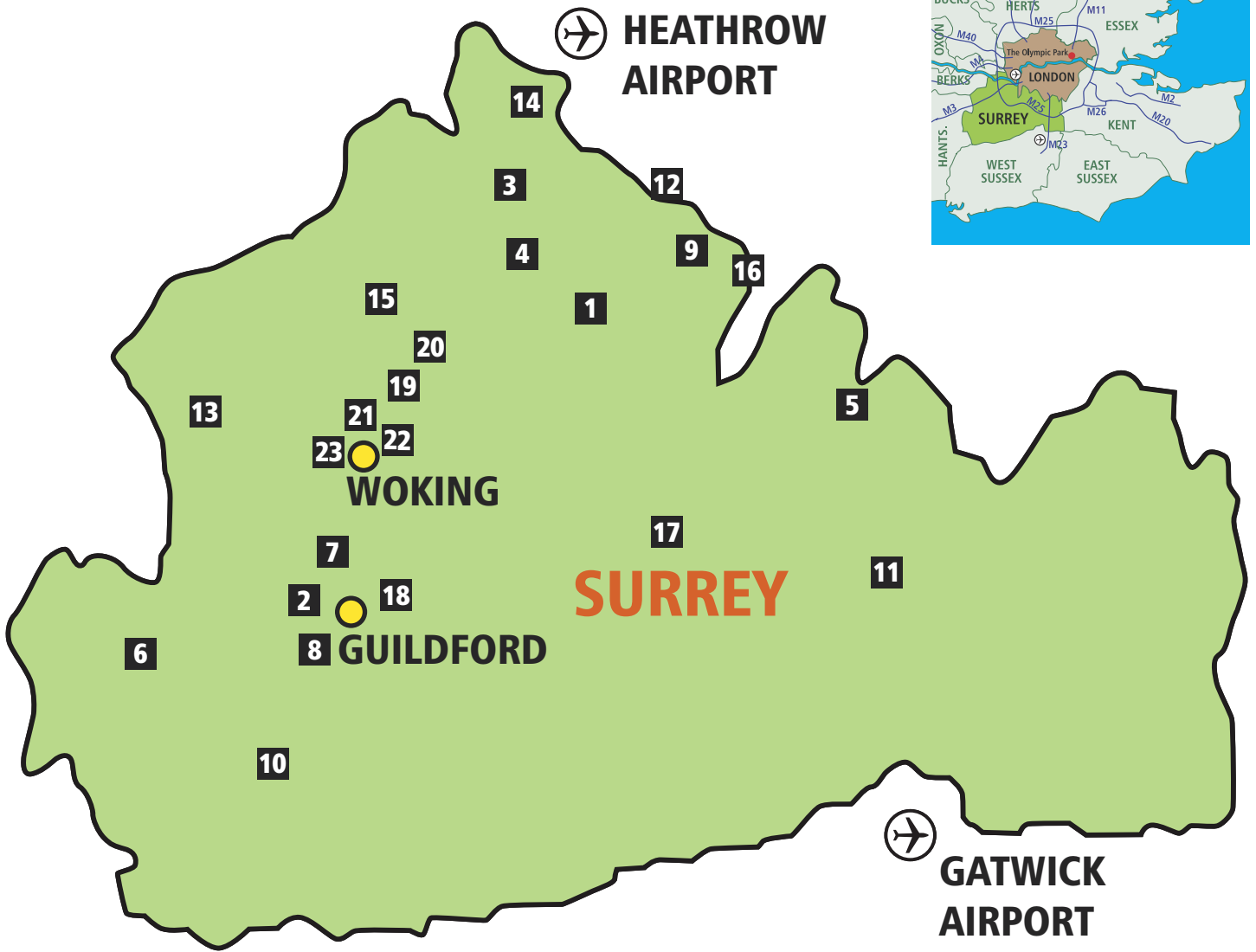
Each of our venues are looking forward to hosting Olympic athletes and promise a very warm welcome. We can offer secure environments, exclusive use of venues* and privacy in which to train and prepare.

As well as the venues listed in this pack, there are additional facilities such as gyms and spas in Surrey that can provide your athletes with support services. These are ideal for strength training and conditioning or just taking some time to relax in one of the swimming pools, jacuzzis, sauna or steam rooms. Your camp adviser can arrange these facilities for you.

* Only available at certain venues and at certain times.



Map of Surrey and location of the training venues



1 ACS Cobham
International School

2 Charterhouse School

3 Elmbridge Canoe

4 Elmbridge Xcel
leisure centre

5 Epsom College

6 Frensham Heights School

7 Guildford College (Merrist
Wood College)

8 Guildford Spectrum
leisure complex and
Guildford Lido

9 Imber Court

10 King Edward's School

11 Littleton Manor Farm Ltd

12 Molesey Boat Club

13 National Shooting
Centre Bisley

14 Queen Mary Sailing Club

15 St George's College

16 Surbiton Hockey Club

17 Surrey Hills

18 University of Surrey

19 Woking Amateur Boxing
Club

20 Woking Athletics Club

21 Woking Football Club

22 Woking Gymnastics Club

23 Woking Leisure Centre
and Pools

Olympic training venues

	Archery	Athletics	Badminton	Basketball	Boxing	Canoeing *	Equestrian	Fencing	Football	Gymnastics (Artistic)
ACS Cobham International School	✓			✓						
Charterhouse School	✓	✓								
Elmbridge Canoe *						✓				
Elmbridge Xcel Leisure Centre				✓				✓		
Epsom College	✓							✓		
Frensham Heights School	✓							✓		
Guildford College - Merrist Wood Campus							✓			
Guildford Spectrum leisure complex and Guildford Lido	✓	✓	✓	✓				✓		
Imber Court *										
King Edward's School	✓									
Littleton Manor							✓			
Molesey Boat Club *										
National Shooting Centre Bisley										
St George's College	✓	✓								
Queen Mary Sailing Club *										
Surbiton Hockey club										
Surrey Hills *										
Surrey Sports Park - University of Surrey			✓	✓	✓			✓	✓	
Woking Amateur Boxing Club					✓					
Woking Athletics Club		✓								
Woking Football Club									✓	
Woking Gymnastics Club										✓
Woking Leisure Centre and Pools								✓		

* Venues and sports are not accredited but offer excellent facilities.

** 50 m pool outdoor at Guildford Lido.

Hockey	Judo	Kayaking *	Mountain Biking *	Modern Pentathlon *	Rowing *	Sailing *	Shooting (All)	Swimming	Table tennis	Taekwondo	Tennis	Trampoline	Triathlon	Volleyball indoor	Water polo	Weightlifting	Wrestling
		✓		✓													
	✓			✓													✓
	✓			✓													
	✓			✓													
	✓			✓				**	✓			✓		✓			✓
					✓						✓						
✓							✓										
✓						✓											
			✓														
✓	✓							✓	✓	✓	✓		✓		✓	✓	
				✓													

Accommodation options

Many of our training camps offer on-site accommodation, for those that don't, or for accommodation for friends, family and VIPs, there are a range of options close to each of the camps.

Surrey is also home to Royal Holloway University; official accommodation for the flat water sports venue, Eton Dorney.

We understand how important it is to have a relaxed and comfortable environment where athletes and their support teams can rest and get a good night's sleep. All our accommodation includes a range of services including Internet access, meeting space and relaxation areas.

Flexible catering options are available including all inclusive facilities and self-catering with secure kitchens. We can provide for special diets and cultural needs, helping your athletes to feel at home.

Accommodation on offer includes luxury hotels, youth hostels and on campus housing at schools and universities. Our 2012 team can put together a range of accommodation options to suit your needs and budget. Telephone us on +44 1372 371 615 or email us at london2012@surreycc.gov.uk visit www.surrey2012.info for more information.



Accommodation at the University of Surrey



Inside accommodation at the University of Surrey

Support services

Surrey is able to offer a range of additional support including a dedicated camp adviser, available 24 hours a day, seven days a week, to ensure all your requirements are met.

Coaching

World class coaches are available to work with your athletes to improve and develop their performance. The Surrey 2012 team works closely with many national and international coaches to provide a service to visiting teams. All coaches will have a minimum Level 4 Coaching badge awarded by the national governing bodies of sport, and can provide excellent coaching to your team. Video playback facilities are also available to help you monitor your performance at some locations.

Health and medical support

Surrey has good hospital and medical facilities, within 15 minutes of any training venue. Medical support can be arranged through experienced local doctors. We also offer physiotherapists, and sports massage professionals with experience of world class sport. We can also provide facilities for drug tests.



Rest and relaxation areas are available at the hotels and training venues and tailored packages can be put together for your athletes and guests.

Sports science

The Surrey Human Performance Institute at Surrey Sports Park is a fully equipped sports science laboratory, available for our visiting Olympic Teams to use. Specialist staff are available to support your athletes or we can host your own experts.

Administrative and logistical support

- Communications service including media advice.
- Internet access, business centre, secretarial support, meeting rooms.
- Translation services, plus local guides.
- Security, provided by local companies and Surrey Police.
- Transport from the airport, around the county and to the Olympic venues.
- Access to journals and reading material.
- Assistance with visas and travel arrangements.
- Support and advice with accreditation.
- VIP assistance at the airport.
- Protocol advice.
- Equipment storage.
- Purchase or repair of equipment.
- Laundry services.

Some of these items are charged for, at a discounted rate, however your team are eligible to receive a £25,000 grant from the London Organising Committee of the Olympic Games to assist with many of these costs.

Services for VIPs, family and friends

Surrey is happy to arrange special packages for VIPs, officials, friends and family.

These packages include:

- Accommodation to suit all budgets
- Conferencing (including video conferencing)
- Venues for special events or functions
- Transport and VIP services at Heathrow and Gatwick airports
- Sight seeing tours of the area and local attractions
- Recreational packages including golf and spa.

A personalised package for you

We hope that this brochure has given you a flavour of the wide range of facilities that are available in the county. We know that every team competing in the London 2012 Olympics will have different needs and budgets. Our team can build tailored packages including training facilities, accommodation options, transport and other support facilities. Just let us know your requirements and we will respond to you as soon as possible. You can contact us on telephone +44 1372 371 615, or email, london2012@surreycc.gov.uk visit www.surrey2012.info for more information.

Grants to cover your costs

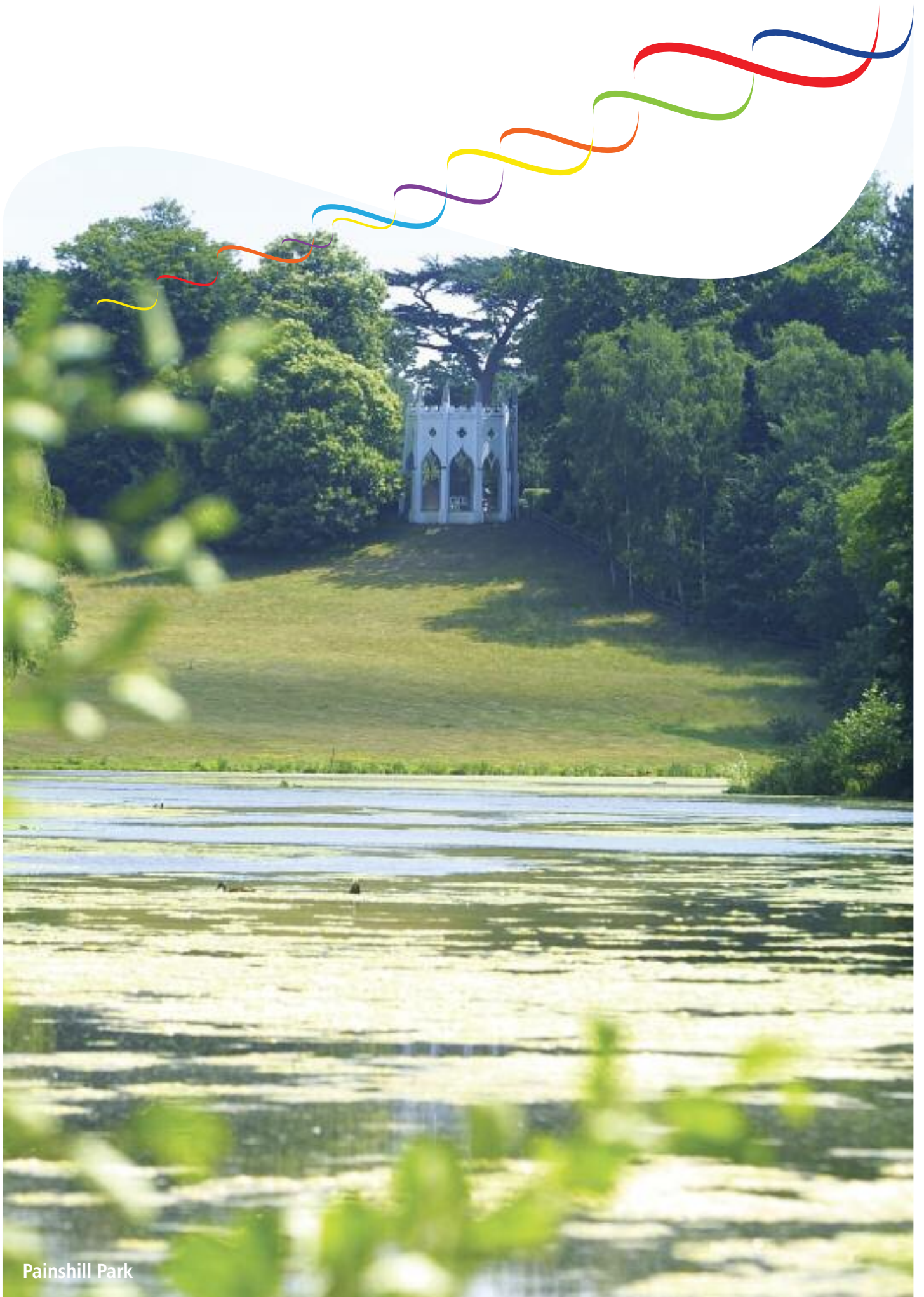
London 2012 is offering a grant to encourage teams from across the world to use official UK training camps as they prepare for the games. The grant covers costs incurred by National Olympic and National Paralympic Committees for pre-games training camps held in the UK between 1 July 2010 and the Games in 2012.

Grants will be awarded up to a maximum of £25,000 and can be used to cover the cost of venue hire, accommodation and support services. Transport expenses including flights, cannot be claimed against the grant.

Surrey can help you obtain this grant, as well as give you advice on where this can be spent.

To find out more contact the Surrey 2012 team by telephone on +44 1372 371 615, or email, london2012@surreycc.gov.uk visit www.surrey2012.info for more information.





Painshill Park

A beautiful county

Known for its beautiful countryside and inland waterways Surrey is home to the breathtaking scenery of the Surrey Hills, designated an Area of Outstanding Natural Beauty. This is a landscape to explore and walking routes, bike trails and bridle paths take you into the heart of English rural life.

There is always plenty to do in a county where old traditions and institutions such as royal residences, cream teas and cricket rub shoulders with modern architecture, contemporary theatre, excellent sporting facilities and state-of-the-art theme parks.

You can enjoy the tranquility of our rolling green hills, soak up the atmosphere of bygone eras in our historical buildings and traditional country pubs, enjoy a day at the races or shop until you drop in our modern bustling market towns.



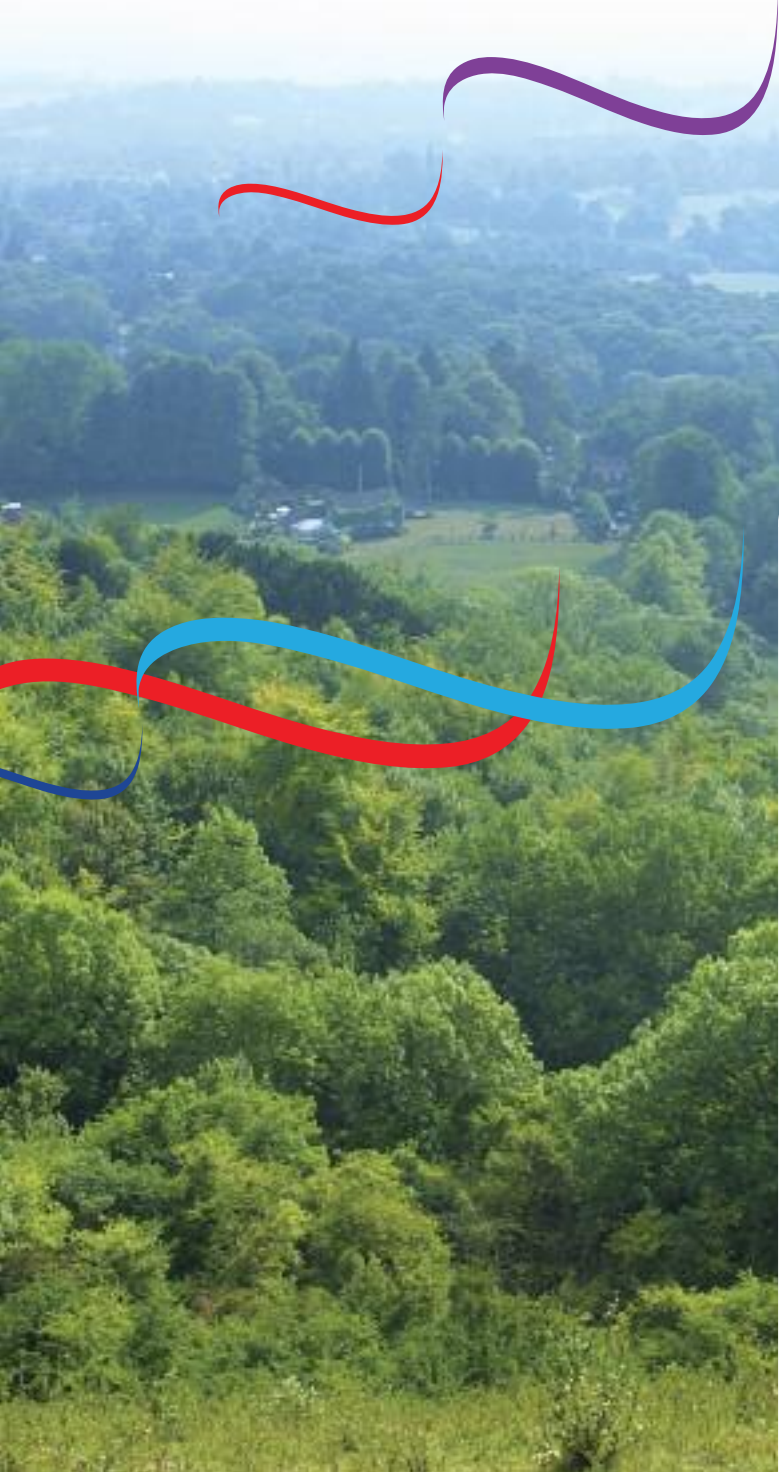
Fun at Thorpe Park



Waterways in Surrey



Surrey Hills



Did you know...

- Surrey is the home of baseball. Teenager William Bray was playing the game in Guildford in 1755.
- Henry VIII owned 11 palaces in Tudor Surrey.
- Brooklands was Britain's first Grand Prix race track in 1926 and the McLaren Formula 1 team are based in the county.
- Surrey is home to four race courses, Epsom, home of the world famous Derby, Kempton, Sandown and Lingfield.
- Surrey has provided the backdrop for a number of films including Gladiator, The DaVinci Code and Harry Potter and the Goblet of Fire.

You can find out more about Surrey, our visitor attractions and rich heritage at:

www.visitsurrey.com

www.exploringsurreypast.org.uk

www.surreycc.gov.uk/countryside

www.surreyhills.org

The cultural legacy in Surrey

We're already celebrating, come and join the party!

In June 2010 and Summer 2012 we'll be holding Celebrating Surrey, a two day festival that celebrates the cultural wealth of the county. With performances from Surrey musicians and dancers, art exhibitions and local food and drink, the weekend launches our cultural programme.

Celebrating Surrey is just one milestone in a three year programme of cultural activities designed to shape the Olympic legacy in Surrey. We're working with our schools to deliver sports development activities and we've also launched a Young Leaders scheme that will see Surrey teenagers receiving training and support over two years before they find themselves volunteering at London 2012.

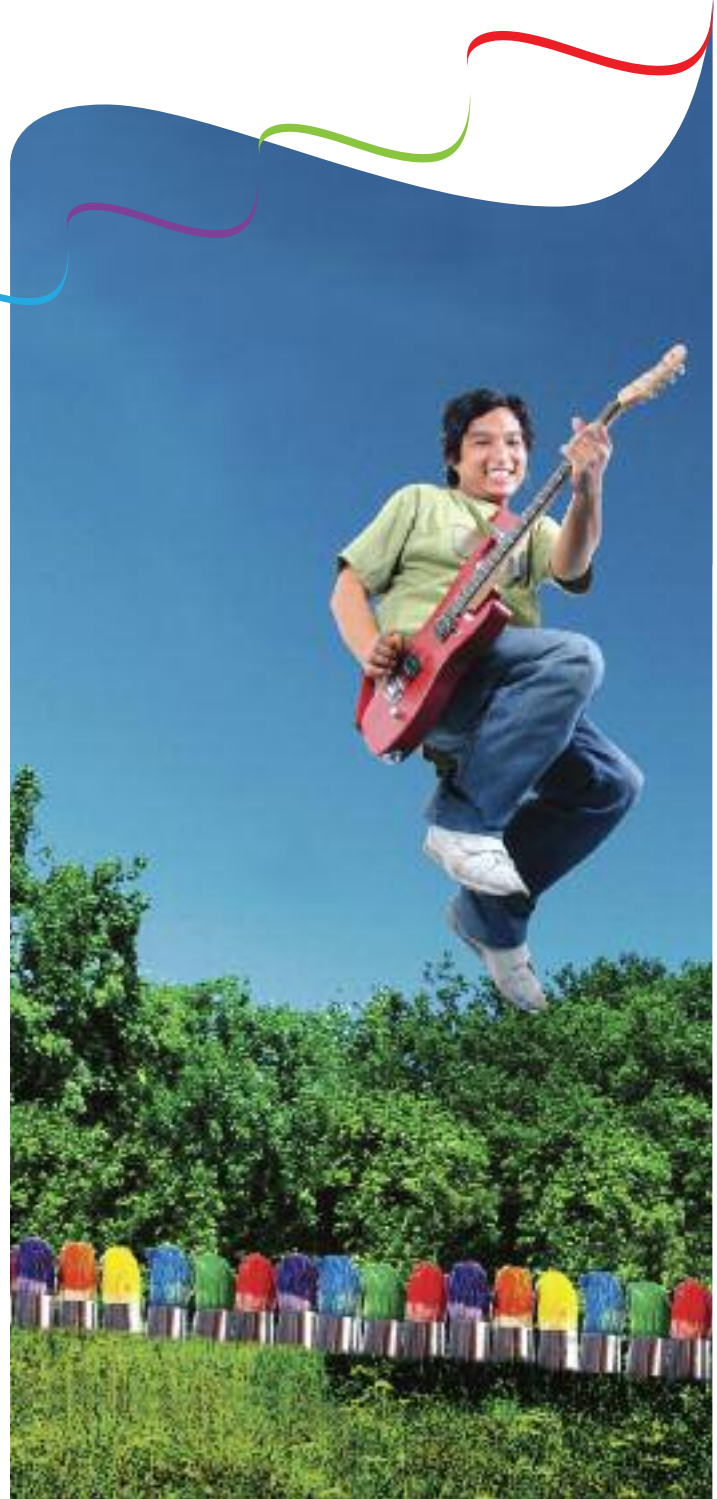
2012 is also the Queen's Diamond Jubilee year and we're proud of Surrey's royal heritage. Close to Windsor Castle the county has been home to many royal palaces and homes over the years and the Royal Family are frequent visitors to Surrey. We'll be marking the Jubilee in style making Surrey a very special place to be in 2012.

Be part of our 2012 legacy

Even before you arrive to train in Surrey we'll be getting in touch to tell you about what's happening in the county and to let you know about some of the cultural exchange activities you may want to take part in. There'll be opportunities for pre-games visits and invitations to some of our key celebrations and events.

We hope you'll stay in touch after your visit too and that your new found links with Surrey will become part of our Olympic legacy.





Doing business in Surrey

Surrey contributes around £5bn net each year to the Exchequer, making it second only to London. Its workforce is better qualified than the average for the South East, employment rates have maintained their traditional high despite the recession and thousands of new businesses register each year.

One of Surrey's greatest economic achievements is its ability to attract global businesses, many of which have their headquarters in the county, at the same time encouraging small and medium sized enterprises. Many industries are represented by the 70,000 Surrey based businesses; advanced manufacturing, automotive engineering, aviation, biotechnology, business and financial services, creative industries, ICT and pharmaceuticals are all aplenty in Surrey. Many of them are world-leading brands. Toyota, Sony, Procter & Gamble, Samsung and Unilever have all chosen Surrey as a base for their headquarters; a reflection of the county's great transport network, its proximity to London and the plentiful pool of local talent.

The county's three world-class universities - the University of Surrey, Royal Holloway University and the University for the Creative Arts - are busy developing the next generation of talent. Between them they are exemplars in everything from the arts to engineering, biochemical sciences to media. All are leaders in their field, with a healthy intake of both national and international students, thereby helping sustain Surrey's status as a serious competitor in the global economy.

Surrey is working actively with key 2012 sponsors including BT to bring benefits to the county.

The South East Development Agency (SEEDA) can help you to make the most of your time in the UK.

SEEDA Guildford

Cross Lanes

Guildford

Surrey

GU1 1YA

Tel: +44 1483 484 200 (reception and switchboard is staffed between 8.30am and 6pm Monday to Friday)

Fax: +44 1483 484247

Surrey has a number of business support organisations including the Chamber of Commerce and Business Link both of these can offer advice on doing business in the county and help you to develop contacts within the local economy.

Surrey Chamber of Commerce

Unit 14a, Monument Way East

Woking

Surrey

GU21 5LY

Tel: +44 1483 726655

Fax: +44 1483 740217

export@surrey-chambers.co.uk

Business Link Surrey

5th Floor, Hollywood House

Church Street East

Woking

Surrey

GU21 6HJ



Conference and meeting venues

Surrey has a range of excellent traditional and innovative conferencing facilities ideal for doing business during your time in the UK.

These include:

Mercedes Benz World

Modern conference facilities and visitor attraction.

Farnham Castle

Historic castle in the beautiful market town of Farnham.

Surrey County Hall

Administrative seat of the county with a range of modern and traditional spaces.

McLaren

Home of the Formula 1 racing team.

Denbies Wine Estate

A working winery with purpose built conference facilities.

University of Surrey and Surrey Sports Park

Wide range of facilities on an attractive campus close to major transport links.

The Light Box

Modern and vibrant art gallery in the heart of Woking.

Pennyhill Park Hotel

Elegant country house hotel and spa.

For more information about these and other Surrey conference venues please visit www.visitsurrey.com



Contact us

Surrey 2012 team
County Hall
Penrhyn Road
Kingston upon Thames
Surrey
KT1 2DN

Email: london2012@surreycc.gov.uk
Phone: +44 1372 371 615 or +44 7870 804 116
www.surrey2012.info



Helen Bridgman and Surriya Subramaniam lead our 2012 team.

Surrey 2012 is a partnership, lead by Surrey County Council, bringing the benefits of the games to our county.



